



**AMLF**

---

*BUSINESS PROFILE*

# ABOUT US

- AMLF is a bulk liquid logistics service provider in India, providing safe and sustainable transport solutions for customers in FMCG, petrochemicals, speciality chemicals and pharmaceutical industries
- Started in 1996, AMLF has been providing logistics and tailor made supply chain solutions for over 26 years



# OUR SERVICES

- **ROAD TANKERS**

ISO Tankers and Road tankers

- **MULTIMODAL TRANSPORTATION**

In ISO & flexi tanks

- **ISO CONTAINERS ON LEASE**

For domestic use

- **CARGO STORAGE AND TRANSFER**

Inter tank, inter flexi & tank-flexi transfers



# ROAD TRANSPORT

- At AMLF, we provide dedicated road transportation via road tankers and ISO Containers
- We specialise in transport of liquid cargo of weights upto 39MT.
- We have an extremely efficient assembly of assets to ensure that your materials are always delivered securely
- AMLF is highly focused on in material handling, transportation, transit monitoring, and transport logistics.



LPG TANKS



Road Tanker

# ADVANTAGES OF ISO CONTAINERS

- Made from stainless steel with protective layers, ISO tanks are highly resistant to corrosion and leakage
- They offer better spill containment and the secure, sealed nature of ISO tanks significantly reduces the risk of product loss and contamination, they are less prone to accidents compared to traditional drums
- ISO tanks can be transported across multiple modes—road, rail, and sea
- Designed to stack efficiently, ISO tanks save space and simplify storage.
- ISO tanks meet international standards for safe transport of liquids, making them widely accepted across countries.



Inside and ISO -Baffles for protection



ISO Containers

# MULTIMODAL TRANSPORT

- At AMLF, we provide multimodal services by rail, and sea to meet the unique demands of each client
- Our expertise spans from piece-meal shipments to full rake movements in rail logistics, allowing us to tailor services precisely to your cargo needs.
- This flexible approach enables the efficient loading of high-volume cargo using flexi and ISO tanks within short timeframes—something not achievable through traditional road tankers.
- By shifting large shipments to rail or sea, carbon dioxide emissions are reduced upto 85% and also provides a more secure mode of transport reducing incidences of pilferage and unwanted activities



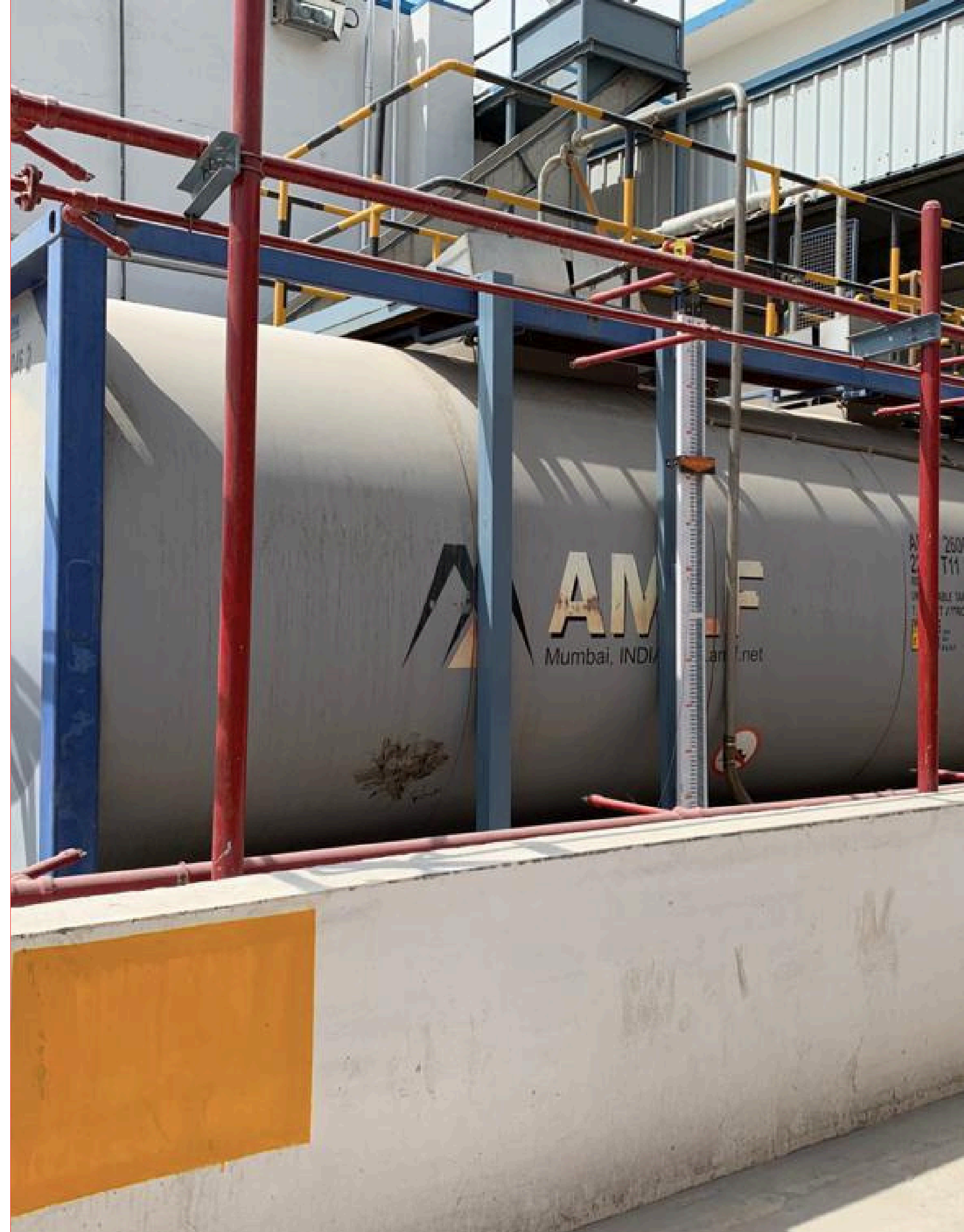
Rakes



ISO Containers

# ISO CONTAINERS ON LEASE

- We own over 500 ISO tank containers that can be leased out on a pro-rata or monthly basis for storage or transportation of your bulk liquid materials.
- We have specialized tanks that can contain a wide variety of sensitive and hazardous liquids, in bulk, without compromising their safety and security.
- We also have a dedicated team of logistics experts, a material handling crew, in-house mechanics, and IT professionals to provide you with a complete range of bulk liquid storage and delivery solutions.



# CARGO STORAGE & TRANSFER

- At AMLF, we help customers by providing cargo transfer and storage facilities at ports, plants or nominated warehouses as well
- We provide customers with solutions to transfer and store import cargo from tanks or flexi tanks to domesticated tanks to save on demurrage costs
- We help customers who buy in drums and IBC's to store and transport in bulk providing them with a more cost efficient logistics solution.
- We help customers to pre-plan purchases by using our ISO tanks and flexis to build inventory at rail sidings or warehouses and ensure just-in-time deliveries to customers







**505**  
**ISO TANKS**



**OUR FLEET**

**408**  
**ROAD TANKERS**



**3**  
**RAKES**

# OUR SIGNATURES

**CUSTOMISED  
ERP**

**FOCUS ON  
GREEN  
LOGISTICS**

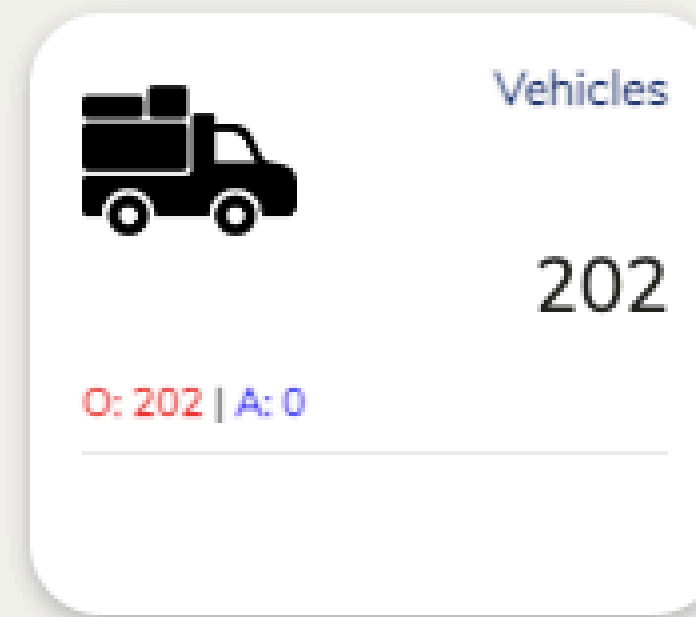
**INHOUSE  
DRIVER  
SAFETY AND  
TRAINING**

**LATEST  
TECHNOLOGY**


**TAILOR MADE  
LOGISTICS  
SOLUTIONS**

# CUSTOMISED ERP

- AMLF has developed a customised ERP that is dedicated to providing customers with end to end visibility across all movements
- customers and vendors are provided dedicated portals which can be integrated with other vendors' TMS's to manage shipments and access data as per their convenience



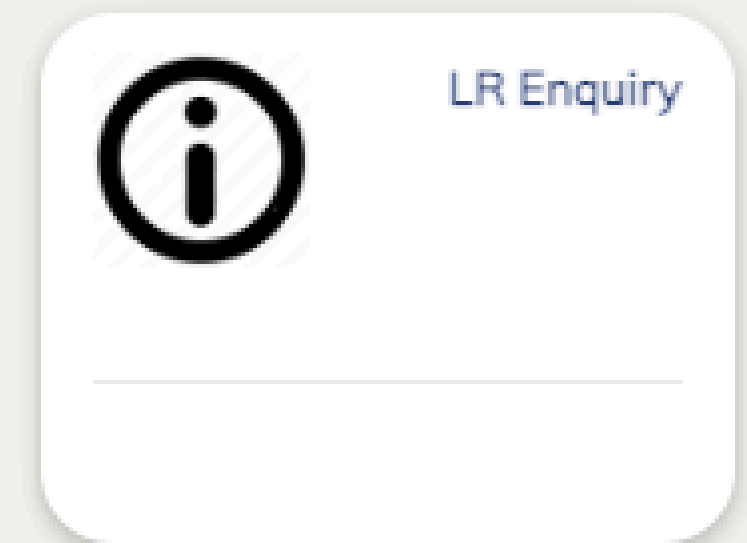
Vehicles




202

O: 202 | A: 0

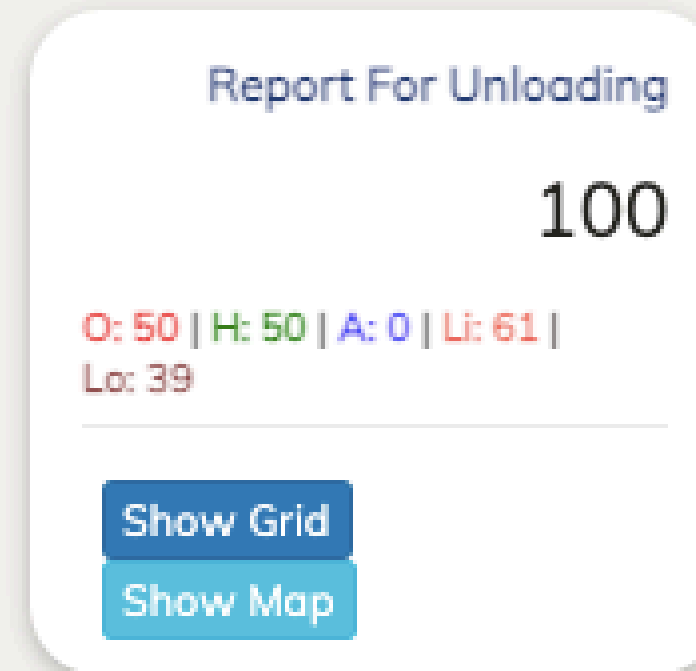
This dashboard card displays the total number of vehicles as 202. It includes a truck icon and a status summary showing 202 Open (O) and 0 Active (A) vehicles.



LR Enquiry



This dashboard card is for LR Enquiry, featuring an information icon. It is currently empty of data.



Report For Unloading

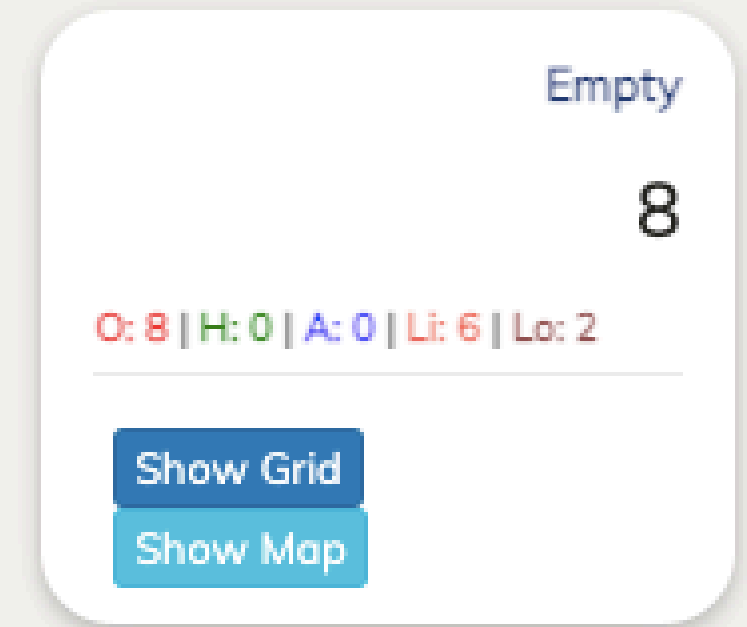
100

O: 50 | H: 50 | A: 0 | Li: 61 |  
Lo: 39

Show Grid

Show Map

This dashboard card shows 100 vehicles in the 'Report For Unloading' status. The status breakdown is 50 Open (O), 50 Hold (H), 0 Active (A), 61 Load (Li), and 39 Load (Lo).



Empty

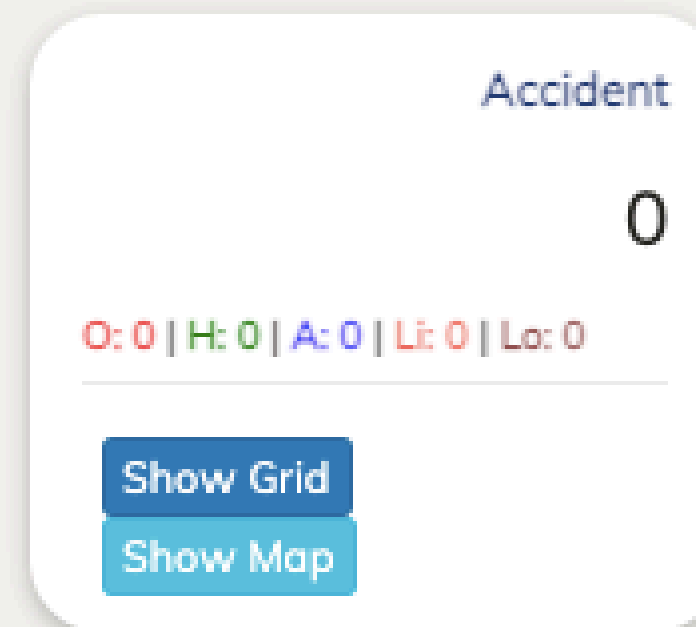
8

O: 8 | H: 0 | A: 0 | Li: 6 | Lo: 2

Show Grid

Show Map

This dashboard card shows 8 vehicles in the 'Empty' status. The status breakdown is 8 Open (O), 0 Hold (H), 0 Active (A), 6 Load (Li), and 2 Load (Lo).



Accident

0

O: 0 | H: 0 | A: 0 | Li: 0 | Lo: 0

Show Grid

Show Map

This dashboard card shows 0 vehicles in the 'Accident' status. The status breakdown is 0 Open (O), 0 Hold (H), 0 Active (A), 0 Load (Li), and 0 Load (Lo).



Sent for Maintenance

3

O: 3 | H: 0 | A: 0 | Li: 2 | Lo: 1

Show Grid

Show Map

This dashboard card shows 3 vehicles in the 'Sent for Maintenance' status. The status breakdown is 3 Open (O), 0 Hold (H), 0 Active (A), 2 Load (Li), and 1 Load (Lo).

# GREEN LOGISTICS

- At AMLF, we are dedicated to providing sustainable logistics solutions, keeping in mind the environmental impact.
- Since 2017, we have converted nearly 25% of all our shipments with a 30% YoY conversion rate to multimodal that has contributed to over 10 lakh KM of road distance to rail which has translated to 8 Lakh KG less Co2 being emitted
- We constantly upgrade our fleet to BSVI emission compliant vehicles that have helped reduce the particulate matter and Co2 emission



# DRIVER TRAINING & SAFETY

- At AMLF, we train our drivers about the vehicle, tank container and the product
- All drivers go through quarterly training sessions in partner with OEM's, NicerGlobe and safety experts about the different actions that need to be taken in case of an emergency
- All of our drivers also go through annual health check-ups in order to ensure their safety and well-being while on the road

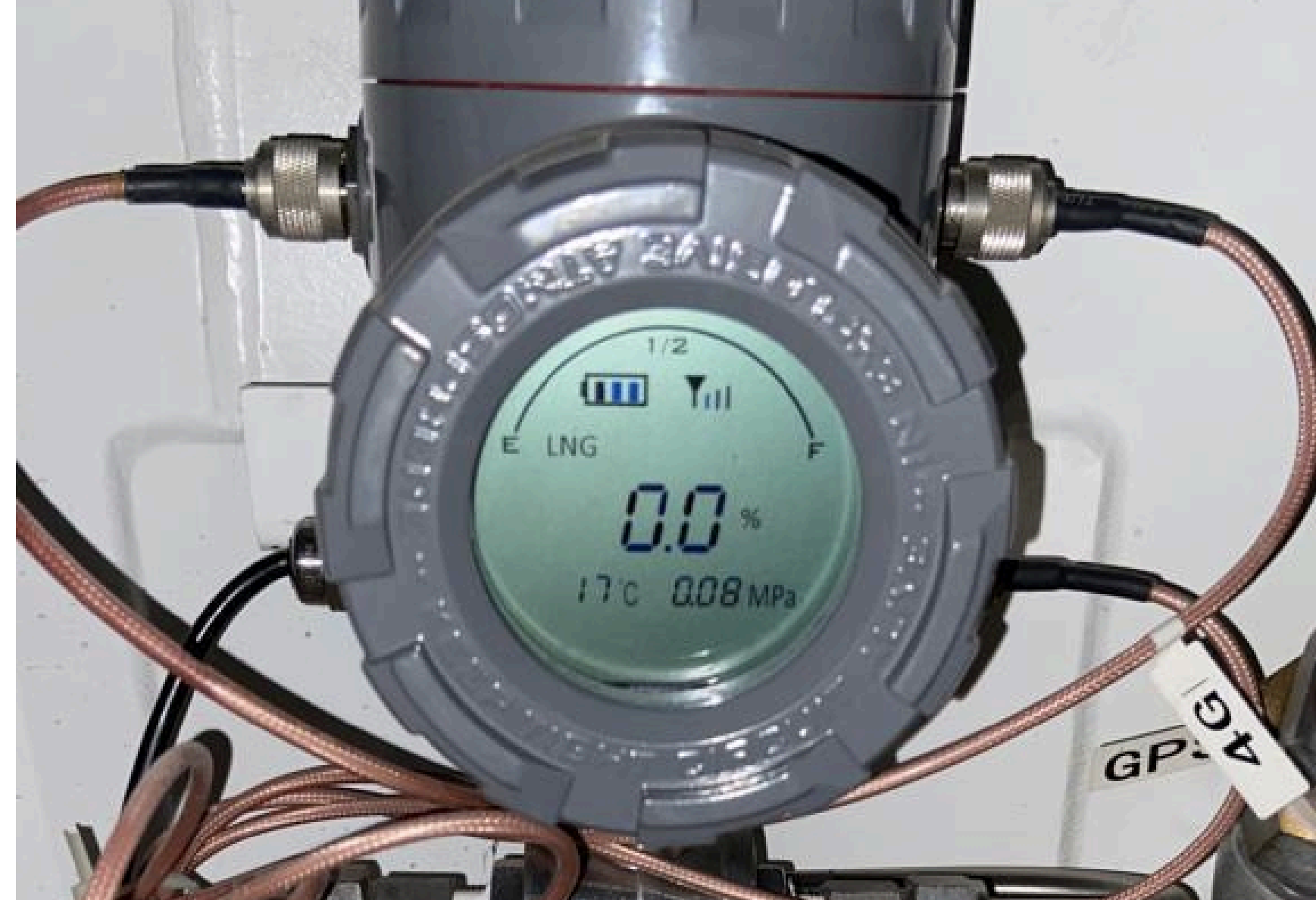


Driver Training



# LATEST TECHNOLOGY

- At AMLF, we are constantly investing in large capacity tank containers to help customers optimise their need for vehicles by carrying a higher payload per shipment
- We use TankMiles by CIMC which is a telematics device that is capable of transmitting cargo temperature, pressure and quantity filled details in real time which provides a great sense of security
- AMLF is working on converting all tank container analog thermometers to digital ones to ensure that cargo temperature is always available in real time at all times



# TAILOR MADE LOGISTICS SOLUTIONS

- At AMLF, we understand that every business has unique logistics requirements
- Our approach starts with a deep dive into your supply chain, analyzing everything from cargo type and volume to delivery timelines and environmental goals.
- With AMLF, you gain a dedicated partner focused on optimizing every step of your logistics process, ensuring reliability and flexibility.





**GET IN TOUCH!**



[website](#)



[info@amlf.net](mailto:info@amlf.net)



[linkedin](#)